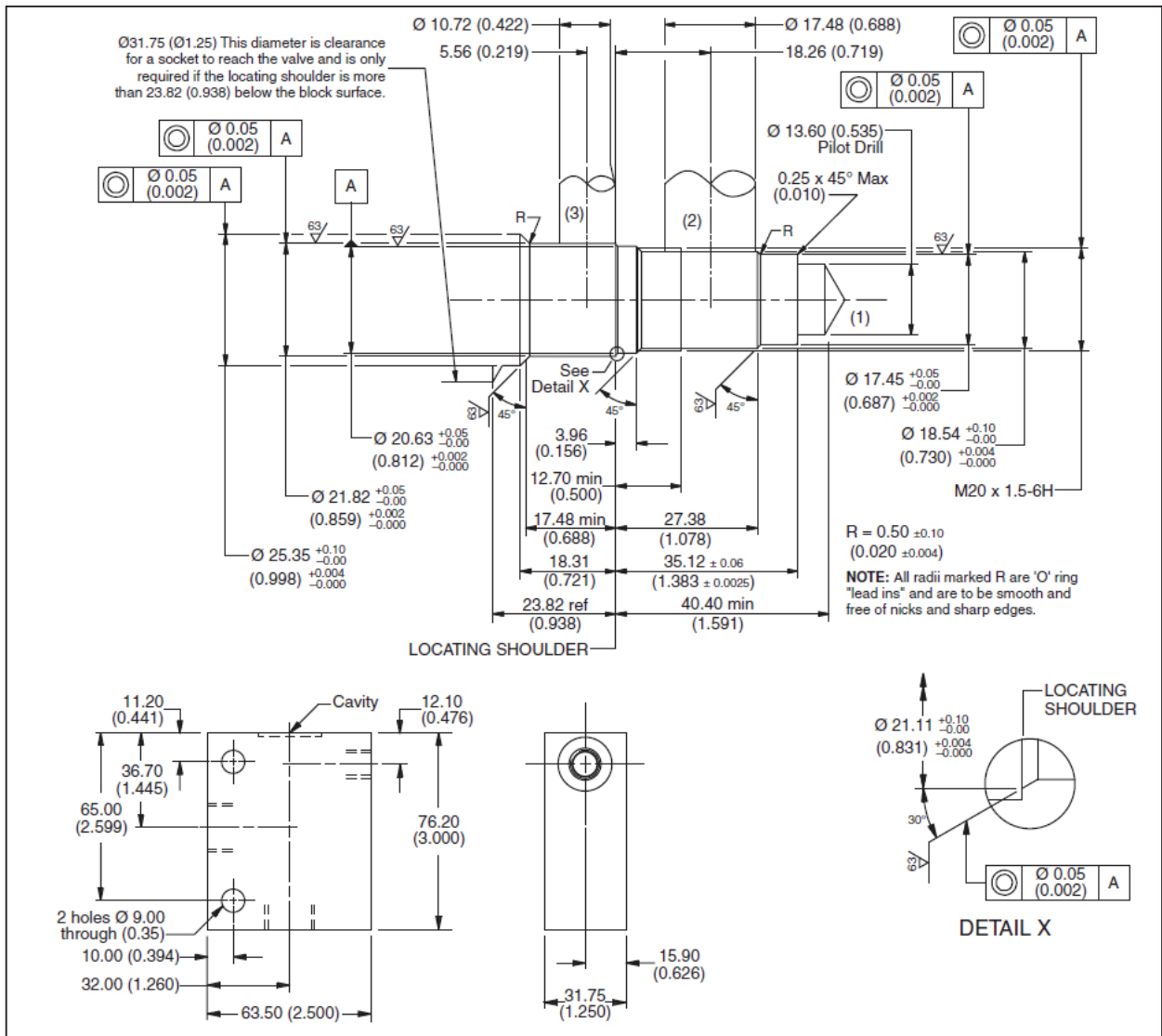


For additional information see Technical Tips on pages BC2-BC3.

Dimensions
 Millimeters (Inches)



Ordering Information

LB10	825	S
Line Body	Port Size	Body Material

Code	Port Size
825	1/4 SAE

Code	Body Material
S	Steel

*Please be advised that this is a non-core line body.
 Additional lead-time and/or pricing requirements may exist when ordering.

CV	Check Valves
SH	Shuttle Valves
LM	Load/Motor Controls
FC	Flow Controls
PC	Pressure Controls
LE	Logic Elements
DC	Directional Controls
SV	Solenoid Valves
PV	Proportional Valves
CE	Coils & Electronics
BC	Bodies & Cavities
TD	Technical Data